

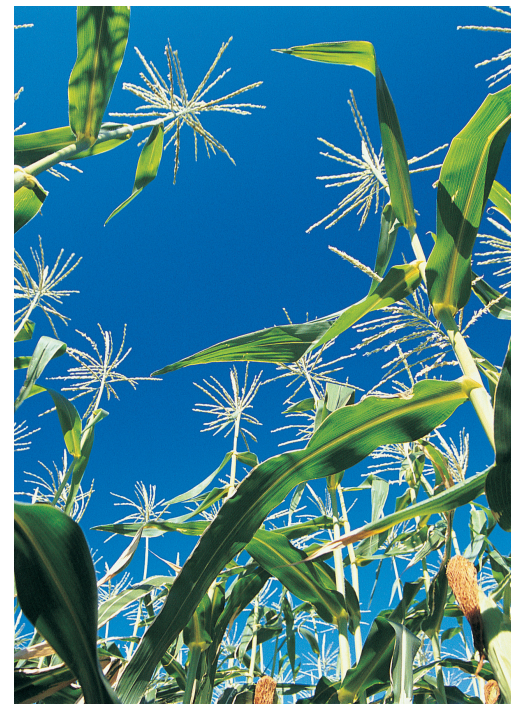
# NutriFUZE



## CORTRx

### 7 Essential Nutrients EDTA & HEDTA

- Synergistic blend of secondary micronutrients with specific ratios designed to improve NPK utilization
- Available under a wide range of soil pH and conditions due to the strongest, most effective chelating agents in agriculture
- Stable and compatible with NPK, water, glyphosate and phosphate-containing fertilizers
- Promotes growth and yield across all crops



Visit [DIAMOND-R.COM](http://DIAMOND-R.COM) for more information.

**CORTRx. Finally! A chelated product that includes seven essential nutrients, including Calcium and Magnesium and is compatible with Phosphate materials.**

# NutriFUZE



## CORTRx

ESSENTIAL 7

(CHELATING AGENTS-HEDTA and EDTA) To be used on agricultural and horticultural crops and ornamentals.

### GUARANTEED ANALYSIS

Calcium (Ca)	0.57%
Magnesium(Mg)	0.24%
Boron (B)	0.08%
Copper (Cu)	0.24%
Iron (Fe)	0.49%
Manganese(Mn)	0.40%
Zinc (Zn)	0.73%

Derived from: Boric Acid, Calcium EDTA, Copper EDTA, Iron HEDTA, Magnesium EDTA, Manganese EDTA and Zinc EDTA

Manufactured by:  
**Diamond R Fertilizer**  
4100 Glades Cut-Off Road  
Fort Pierce, FL 34891-1573  
F001573

Weight per gallon: 9.98 lbs.

### APPLICATION RATE:

- i) ROW CROPS, VEGETABLES, TREE, VINE, NUTS and CITRUS: 1-2 quarts per Acre (Increased application rates may be advantageous in high yielding environments)
- ii) ORNAMENTALS: 2-3 pints per 100 gallons of water
- iii) TURF

1) GREENS: 0.5 to 1.0 oz per 1000sqft

2) FAIRWAYS and LAWNS: 1.0 to 2.0 oz per 1000sqft  
Apply in-furrow, pop-up, drench or foliar (center pivot irrigation, ground or aerial) with water or NPK fertilizers.

**Storage Instructions:** Do not store below 32 degrees F. CORTRx ESSENTIAL 7 is completely compatible with phosphate-containing fertilizers and is non-corrosive. Warning: Some crops may be injured by application of Boron. This product contains Boron and must be used only according to the manufacturer's directions. Use of this fertilizer on any crop(s) other than those recommended may result in injury to the crop. The formulation of CORTRx ESSENTIAL 7 accommodates safe in-furrow application, at label rates. Do not mix CORTRx ESSENTIAL 7 with methylated seed oil (MSO), crop oil concentrate (COC) or oilbased pesticide, it may result in leaf burn.

**Purpose:** CORTRx ESSENTIAL 7 is a combination of essential secondary and micronutrients designed for blending with NPK to enhance fertilizer programs and maximize yield potential.

**Precautions:** Obtain special instructions before use. Do not handle until all safety precautions have been read and understood. Wear eye protection, protective gloves, protective clothing. If exposed or concerned; get medical advice/attention. Store locked up. Dispose of contents/ container to comply with applicable local, national and international regulation. Where exposure through inhalation may occur from use, approved respiratory protection equipment is recommended.

**Conditions of Sale and Warranty:** Seller warrants that the material contained herein conforms to the chemical description on the label and is reasonably fit for the use therein described when used in accordance with the direction for use, subject to the risks referred to above. THE SELLER DOES NOT MAKE OR AUTHORIZE ANY AGENT OR REPRESENTATIVE TO MAKE ANY OTHER WARRANTIES, EXPRESS OR IMPLIED AND EXPRESSLY EXCLUDES AND DISCLAIMS ALL IMPLIED WARRANTIES OF MERCHANTABILITY OR FITNESS FOR A PARTICULAR PURPOSE. BUYER'S EXCLUSIVE REMEDY AND THE SELLER'S EXCLUSIVE LIABILITY, WHETHER IN CONTRACT, TORT, NEGLIGENCE, STRICT LIABILITY OR OTHERWISE, SHALL BE LIMITED TO REPAYMENT OF THE PURCHASE PRICE OF THE PRODUCT. In no case shall the seller be liable for consequential, special or indirect damages resulting from the use or handling of the product. Buyers and all users are deemed to have accepted the terms of the LIMIT OF WARRANTY AND LIABILITY which may not be varied by any verbal or written agreement.

☐ 2.5 gal ☐ 30 gal ☐ 250 gal

**CAUTION: KEEP OUT OF REACH OF CHILDREN**

